

Victoria Orchid Society



Inside this issue:

- 2 President's Message**
- 3 Upcoming Events**
- 3 Past Events**
- 5 PNWJC - Judging News**
- 7 Special Report – Listen to Your Orchids**
- 9 Talk to Your Orchids**
- 10 Minutes of November meeting**
- 11 Society Information**
- 12 Classified ads**



*Best plant at the November meeting and awarded a Best of Class at the Fraser Valley Show:
Shirley Page's Phrag Grande
Photo by Shirley Page*

Meetings:	
2010	
Spring	
Jan 26 th	
Feb 23 rd	
Mar 23 rd	
Apr 27 th	
May 25 th	
June 22 nd	



From the Editor

Goodies for the January meeting are requested from those members with last names beginning with W, Y, A, & B.

Ble Morning Glory 'Remar' HCC/AOS

Welcome to the year 2010. The Member Directory will be available at the January meeting. It can be sent as an email PDF to those people who are not able to get to the meeting or be picked up at a later meeting. Please email me if you would like it sent out to you.

Diana Rowles

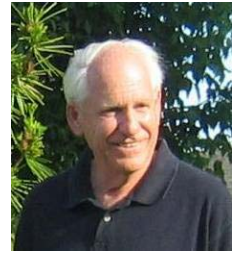
Contributions to the newsletter can be made up to 14 days before the next meeting date by contacting me by phone or email. (250-385-8888 or enviroed@telus.net).

Be sure to check out the Society's website at <http://victoriaorchidsociety.com/>

Logo photo D.W. Smith

The President's Message

You can rely on orchid growers to disagree about which is the greatest orchid to grow, about potting media, and whether the season is early or late. Some like plastic, some like clay; some like miniatures, some like floozies. Each wonders about the other's peculiar taste in plants. But we all agree that orchids enrich our lives and that belonging to a congenial orchid group expands our horizons horticulturally and socially.



Art Macgregor

It would be nice to say that the charms of the orchid must therefore lead to bigger and better societies every year; this is not the case. Smaller seems to be the norm nowadays. The multiple distractions and other opportunities in people's lives means that we need to preserve and protect what we have in our society and this mean we have to do all we can to maximize our opportunities to enjoy the orchid world as we now know it. The single best way to do this is to take part in the planning of, operation of, and exhibiting in our annual show at UVic (March 4-7). This one activity brings together all the people and plants that we enjoy; it brings visitors and new members, and yes - it brings sales and the revenue which keeps us going for another year.

And so - to keep the ship afloat, to learn more about orchids, to have a good time now and in the future, we will need contributions from all members to make the show a success. Publicity - did you know there are 45 florist shops in the yellow pages and 30 garden shops? And that there are at least 20 other garden/flower clubs in the area? We need to reach them all. So - we will be calling on many of you to help distribute posters and dollar off tickets as part of the campaign to help the society thrive.

As the saying goes: "In a garden or greenhouse flowers are fleeting but friendships last for years".

Good growing.

*Art Macgregor
President.*

New Stuff

The Society has purchased a new projector for our meetings. We will test this out at our January meeting with an expert on hand. This should allow us to enjoy Koichi Nakatani's presentation of the Toyko Orchid Show to the fullest.

We have a new library cart to display our library books more easily and give greater access to the members. We hope to post a list of the available books on the web site before the meeting. There will also be catalogues at the cart for easy browsing. We have a great library, so please use it.

Upcoming Speakers

*Jan – Koichi Nakatani
Tokyo Orchid Show*

*Feb – Linda Gileksen
Integrated Greenhouse
Pest Management*

*Mar – Howard Ginsberg
Phalaenopsis*

Upcoming Events

The January 26th meeting

Koichi Nakatani will be presenting a slide show of the Tokyo Orchid Show.

The Victoria Orchid Society Spring Show will be held from March 4th to 7th at the Student Union Building at the University of Victoria. This is our major show for the year, so get your plants tidied up and ready for the big event. Nancy will be sending out a bulletin shortly, describing the volunteer help required for the show and defining the actual responsibilities of the jobs.

Past Events

The November 24th meeting featured mini-presentations by some of the experts of the Society who addressed various aspects of orchid growing.

Orchid culture - Art Macgregor & Joe Chow
Potting, mounting, media, watering



Art instructs the plant



"The birds and the bees" - Jonathan Littau
Hybridizing from concept to flower, to pollen, to flask



A rapt audience for Jonathan



December 8th – Christmas Party

The Christmas party was held in a much enhanced atmosphere at the Garth Homer Centre. The curtained-off section of the room was made festive with lovely decorations, subdued lighting, a great display table and fantastic food.



The display table contained many beautiful plants and was expertly discussed by Ingrid and Debb



Santa put in a brief but welcome appearance handing out chocolate coins.



The food was delicious. This year, the policy of depending on finger foods was abandoned and the results were amazing. There were a large number of scrumptious appetizers, fresh salads, specialty hot dishes, and glorious desserts. The crowd moved quickly to the food table and everyone found so many dishes they liked that it was hard to choose – the start of Christmas over-eating!



The prize draw contained many lovely gifts and most people went home with at least one item. Svend donated a large number of his beautiful poinsettias which were used to decorate the tables as well being entered into the prize draw. Those left on the tables went home with the few people who had not won anything in the draw.



Patrick van Adrichem was top bidder for *Orchid Wiz* and Joe Chow won the Lee Valley gift certificate door prize.

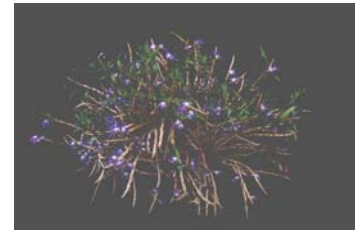
Judging center

On October 16, 2009 at the Fraser Valley Orchid Society show judging in Langley, the following AOS awards were granted:



Abu Salleh

- *Doritaenopsis* ‘Unidentified Fantastic Object’ HCC/AOS 77pts ➤
(*Dtps.* Ganlin Fairy x *Phal.* Tai Lin Angel)
Exhibitor: Koichi Nakatani
(award is provisional pending hybrid name registration)
- *Dendrobium victoria-reginae* ‘Blue Genes’ CCE/AOS 91pts ➤
Exhibitor: Pat Van Adrichem
- *Vanda* Pure’s Wax ‘Blue Waxy’ HCC/AOS 78pts
(*Vanda* Doctor Anek x *Vanda* Kasem’s Delight) ➤
Exhibitor: Koichi Nakatani



Photos by Jerry Suffolk.

At the AOS Pacific Northwest Judging Center (Vancouver)’s monthly meeting on November 14, 2009, the following AOS award was granted:

- *Paphiopedilum* Salty ‘Val’ CCM/AOS 84pts ➤
(*Paph.* Bordube x *Paph.* F. C. Puddle)
- Exhibitor: Wayne Louie



At the AOS Pacific Northwest Judging Center (Vancouver)’s monthly meeting on December 12, 2009, the following AOS award was granted:

- *Cattleya* Pole-Star ‘Grouse Mountain’ CCM/AOS 86pts ➤
(*C. coccinea* x *C. briegei*)
- Exhibitor: Don Bednarczyk



Photos by Judy Higham

Plants exhibited:

- Cattleya* Pole-Star ‘Grouse Mountain’ (awarded)
- Paphiopedilum* Jade Dragon
- Cattleya jenmanii* (nominated, not scored)
- Microsaccus wenzelii*
- Darwinara* Charm
- Cattleya* Mini Purple
- Galeandra leptoceras* (nominated, not scored)
- Doritaenopsis* Taisuco Twilight x *Doritaenopsis* Taisuco Happyfire
- Phalaenopsis* Princess Kaiulani

More good news as another one of our AOS student judges, Ross Otto, from Calgary, is slated for advancement to probationary status. Congratulations Ross!

Special Report

Listen to your orchids - part 1

By Don Bednarczyk

Orchids need the right amount of light and water and to be kept at the right temperature to flourish. But how do you know if that is what you are giving them? All three are interrelated and cannot be considered in isolation. So you do not get overwhelmed, we will consider one a month and then bring them together again at the end. I hope that you will, in the process, get some hints at listening to your orchids.

TEMPERATURE



Masdevalliana

Temperature is the most often missed piece of the picture. Chemical reactions on average double their rate every 10 degrees Celsius that the temperature goes up. All plants and animals are just big bags of chemicals reacting away. You and I are so adapted to living at 37 C and we would be on the limits of life itself if our temperature was raised or lowered 10 C. Plants are a lot more adaptable, but you can only go so far from the conditions they have evolved to grow in. We are all familiar with warm, intermediate, and cool growing plants. And we can push it a bit. But I cannot grow most Phalaenopsis in my house because it is just too cold in the winter. Someone else cannot grow a Masdevallia because their home is just too warm. That basic limitation we are all used to.



No-name Phal

But a lot of growers do not recognize that plants need a daily rise and fall of temperature to thrive. Why is that? Plants basically convert carbon dioxide and water into sugar by photosynthesis. They do that using a lot of enzymes that have evolved to work in a specific temperature range. That is what makes them warm, intermediate, and cool growers. But at the same time they are making sugar, they are using the energy stored in that sugar to make proteins, pigments and structures such as leaves, roots, and of course flowers. They use that sugar day and night. They can only capture energy from the sun during the day. But they use the energy day and night. So simply put, if they use more energy than they store during the day, they do not grow well. So we need to slow down their metabolism at night by lowering the temperature. Usually a 5 to 10 degrees C drop works well. Remember, chemical reactions run slower at lower temperatures. I have tried to grow orchids at work where the temperature was 20 C, day and night. It was an exercise in futility. They kind of grew. They got weaker. They never flowered.

So how far can you push lowering the temperature at night? The answer is only so far. And to further complicate the matter, many of our epiphytic orchids do not actually produce sugar during much of the day. They have evolved a defense mechanism against drying out in the heat of the day. Their stomata, the pores that let carbon dioxide into their leaves, also let water escape. So they have evolved a metabolism which allows them to absorb energy from the sun while holding their stomata closed. Then as it cools off, the stomata open and carbon dioxide enters the leaf, and then sugar is produced. So they need a period of darkness which is warm enough to let sugar get produced. Many orchids from the tropics, where the heat lingers until late at night, have evolved this way. But even there, it is darn cool by morning. Most orchids from moist alpine areas, where it cools off as fast as the sun sets, did not evolve this way.

Part of your knowing how much and how fast to lower the temperature is knowing where the orchids came from in the first place. All orchids are not created equal. And hybrids, mixtures of genes from all over the place, come from nowhere. So what are you to do? If your plants are growing really slowly and the growths are long and thin, question if the night time temperature is too high. If the pseudobulbs are fat and hard, and there are little bits of honeydew on the growths in the morning, you probably have got it right.

And many orchids need a yearly temperature signal to tell them it is time to bloom. For some orchids the signal from changing light conditions is the strongest. Yet for others it is the signal from changing daily high and low temperatures that is the strongest. Some Phalaenopsis demand a cool night temperature for at least a month in the fall to set their buds. I know of people letting their Phalaenopsis sit at 12-13 C at night for several weeks in the fall. They reportedly seem to almost instantly bud up when returned to normal growing temperatures.



No-name Phal



*Slc Jewel Box
'Dark Waters'*

Some Cattleyas need both a light and a temperature signal to set their buds. If your plants are growing well and getting plenty of light but just will not bloom, consider looking into missing yearly temperature changes that are the problem. For instance, in the summer my Cattleyas grow in a greenhouse that goes from about 18 C at night to about 27 C by day (and up to 34 C on a rare really hot day). And it may be midnight before the temperature drops below 22 C. The temperatures slowly come down in the late summer and early fall and they get moved into my light room in early to mid October. There the winter temperature is 15 C by night and 23 C by day with a more rapid fall in temperature at night. That is not a huge change, but combined with a shorter (12-13 hour) light period, it seems to do the trick. Then in mid May it is back to the greenhouse and the cycle continues.

Please remember that the temperatures given here are AIR temperatures. The temperature at the plant may be quite different than the temperature on a thermometer at the other end of the room. A plant sitting in sunlight will be a lot warmer than the room. Likewise, a plant sitting on a windowsill at night will be a lot cooler than the room. Feel the plants at different times of the day. Or, if you are technically inclined, get one of those infrared thermometers and measure actual leaf temperature. It is the differential in temperature at the plant that you must consider. Room temperature is only a guideline.

Next month we will look at light, both natural and artificial. In the third month we will look at water and the things you add to it to perform their purported magic.

Many thanks to Don Bednarczyk for his permission to use this article and the two that will appear in the February and March editions of the newsletter.

Mary, Mary, quite contrary, how does your garden grow?

Carla Wintersgill, Globe and Mail, Wednesday June 24, 2009

Forget silver bells. According to new research by the Royal Horticultural Society in Britain, the way to a green thumb is through a silver tongue - especially when it belongs to a woman.

In a month-long experiment, the RHS found that tomato plants grew up to two inches taller when subjected to the sound of a female voice, rather than a male's. As part of its ongoing "Grow Your Own" campaign, designed to inspire Britons to start their own fruit and vegetable gardens, the RHS held open auditions for people to have their voices recorded.



*Poul Hansen's greenhouse in bloom
What do you read to them. Poul?*

Five men and five women were selected and asked to read from Darwin's *On the Origin of the Species*, Shakespeare's *A Midsummer Night's Dream*, or *The Day of the Triffids*, a science-fiction novel by British writer John Wyndham, in which carnivorous plants attempt to take over the world.

The recordings were looped and uploaded onto MP3 players and headphones were attached to the pots of 10 tomato plants, each plant listening to a constant stream of a different voice. Two plants were left without any sound as a control group.

The RHS found that the tomato plants that listened to the female voices grew an average of an inch more than the ones listening to the male voices. Some of the men's tomatoes did so poorly that they grew more slowly than the soundless group.

Fittingly, the fastest-growing plant belonged to Sarah Darwin, a great-great-granddaughter of Charles Darwin, who read a passage from his famous treatise.

Would anyone like to test the literary tastes of orchids and their gender preference?

Victoria Orchid Society
Minutes of General Meeting November 24, 2009



Blc Chunyeh Sun #8

The meeting of November 24, 2009 was held in the Garth Homer Centre. President Art Macgregor called the meeting to order at 7:30 p.m. We had a returning member, Rick Rancourt, here after 5 years in Thailand

Secretary's Report: MOTION: Noreen Taylor/Ingrid Ostrander moved that the minutes of the October 2009 meeting be approved as published in the newsletter.

CARRIED UNANIMOUSLY

Treasurer's Report: Jane Mason presented the financial report for the month of October 2009, moved for acceptance, seconded by Jeff Haywood.

CARRIED UNANIMOUSLY

Executive Report:

1. *Christmas Party:* The pot luck dinner will be on Dec. 8th at Garth Homer starting at 7 PM. There will be games, a door prize (Lee Valley \$50 Gift certificate), a special guest and Orchid Wiz will be auctioned off. Please dress up, bring something for the prize draws and something for the show table.
2. *Richmond:* We will donate \$150.00 to the Vancouver Judging Centre.
3. *Projector:* The old projector can be repaired for \$1,400 or replaced for \$1,400, or for \$1,500 we can get 4,000 lumens. Jonathan suggested we use the Garth Homer equipment and Bryan suggested we contact a Nanaimo member who is in the business. Art requested approval to purchase a new projector.

MOTION: Ingrid moved that the executive committee can spend up to \$2,000 including all taxes etc. to purchase a new projector. Seconded by Noreen.

CARRIED UNANIMOUSLY

New Business:

- Jeff Haywood has clear plastic pots of various sizes from California. See him if you are interested in purchasing some.
- Will Ostrander is offering prints of his paintings for \$5.00 each, proceeds to go to the judges travel fund.
- It was suggested Vic OS should purchase a copy of Orchid Wiz and a lap top and move into the 21st Century.

Show Table: Ingrid Ostrander presented the display table.

Speaker: Following the coffee break and prize draws there were mini presentation by Art Macgregor and Joe Chow on repotting and by Jonathan Littau on breeding.

Next Meeting: 7:30 p.m. Tuesday, January 26, 2010 at Garth Homer Centre.

Adjournment: The President declared the meeting adjourned at 9:55 p.m.

Respectfully Submitted - Kathryn Collins

Society Information

General meetings are held at the Garth Homer Centre, 813 Darwin Ave., Victoria B.C., on the fourth Tuesday of the month. Members are encouraged to bring in their orchids in bloom to display on the show table.



L. lobata Fiesta
x L. lobata Boa Vista

Guest speakers are engaged for these meetings and often speakers bring plants for sale. There is also a members' sale table where plants may be purchased by members.

Plant sales begin at 7:15 pm and the meeting runs from 7:30 pm to 10:00 pm.

Membership fees are \$20.00 for individuals, \$30.00 for households. The Society membership year runs from September to September, but meetings are not held in July and August. Name tags are available for \$9.00, magnetized tags are \$11.00.

Coffee and tea are available at the meeting and goodies are provided by members in rotation, based upon the initial letter of their last names. Members with last names beginning with W, Y, A, & B are asked to bring goodies to the January meeting.

The Victoria Orchid Society Newsletter is published monthly, around the 15th of each month, excepting December, July and August. Newsletters will be sent by email to members with email access. Email addresses will be blind copied. Upon request, copies of the newsletter may be picked up at meetings for those not wishing to print off their copy at home. Those with no email access may ask for a mailed copy. (We are trying to cut down our mailing costs.)

Advertising is free of charge to members in good standing: \$2.00 per business card size ad per month to a member owned business (\$20.00 per fiscal year), \$5.00 per month to non-member businesses (\$50.00 per fiscal year). Businesses are defined here as those with a PST number.

The Society's mailing Address is 1199 Tattersall Drive, Victoria, B.C. V8P 1Y8.

Who Does What?

President	➤ Art Macgregor	Membership Chair	➤ Joyce Wilson
Vice-president	➤ Noreen Taylor	Library Committee	➤ Pat Hendrickson
Secretary	➤ Kathryn Collins	Spring Show Chair	➤ Nancy Miklic
Treasurer	➤ Jane Mason	Show Treasurer	➤ Kathryn Collins
Past President	➤ Don Miklic	Plant Sales	➤ Poul Hansen/Angela Lougheed/Wanda Shum
Directors:	➤ Joyce Wilson	Prize Draw	➤ Florence Davis/Dave McElderry
	➤ Diana Rowles	Plant Orders	➤ Debb Ward
	➤ Catherine Frutiger	AOS Rep	➤ Jonathan Littau
	➤ Dave McElderry	COC Rep	➤ Art Macgregor
	➤ Wanda Shum	Culture Classes	➤ Dave McElderry
	➤ Florence Davis	Web Page	➤ Kurtis Herperger
	➤ Pat Hendrickson	Plant Photos	➤ Diana Rowles
	➤ Poul Hansen	Hillside Show	➤ Dave McElderry
	➤ Angie Lougheed	Programs	➤ Art Macgregor
		Newsletter Editor	➤ Diana Rowles
		Newsletter proof reader	➤ Joe Chow
		Executive Spokesman	➤ Art Macgregor
		Christmas Party	➤ Noreen Taylor
		Mentorship program	➤ Noreen Taylor
		50/50 Draw	➤ Catherine Frutiger
		Coffee management	➤ Lioba Samer

In emergencies, call Art Macgregor at 250-217-4390

Errata:

Apologies to Shirley Page for identifying the wrong plant (a Paph!) as her "Best of Class" *Phrag* Grande in the November newsletter. Here is the real *Phrag* Grande! When it was awarded, it had three blooms. When it was voted best plant on the display table, it had four blooms! (see page 1 of this newsletter)



Upcoming Shows/Other Societies

OSA Orchid Fair (Show & Sale)

The show will take place **February 19 - 21, 2010**

MacEwan College South Campus, 7319 29 Avenue NW, Edmonton.

Check back for updates on our 2010 show as they become available! www.orchidsalberta.com

Classified Advertisements:



B.C. GREENHOUSE BUILDERS LTD.
The Gardener's Choice since 1951

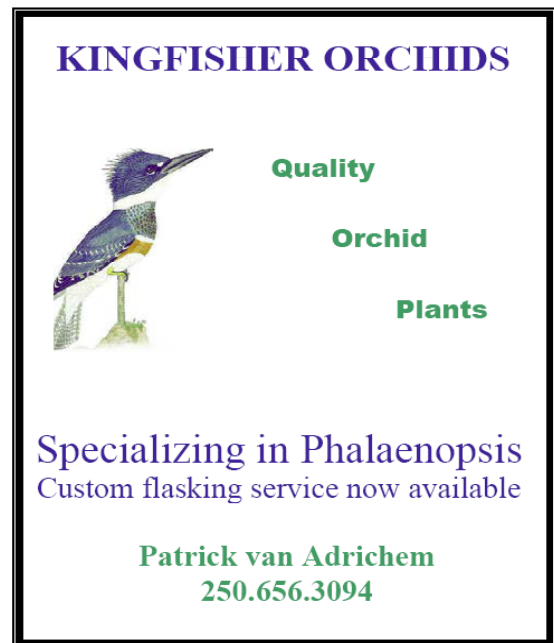
represented by
Russ Davis

572 Peto Place
Victoria, BC V8Z 2K6

wk: 250-727-0067
cell: 250-744-6714
email: ddavis@pinc.com

Sales and Service

- Commercial and Hobby Greenhouses
- Pre-fabricated Enclosures
- Cold Frames
- Heating and Ventilating
- Soil Cables
- Automatic Vent openings



KINGFISHER ORCHIDS

**Quality
Orchid
Plants**

Specializing in Phalaenopsis
Custom flasking service now available

Patrick van Adrichem
250.656.3094