

# Victoria Orchid Society



*This beautiful, floriferous Miltoniopsis phalaenopsis grown by Don Mills was chosen as the best plant on the display table at the May meeting.*

*Photo by Jessica Champagne*

*Inside this issue:*

- 2 President's Message**
- 2 Upcoming Events**
- 3 Past Events**
- 3 Country Diaries**
- 4 The Book Corner**
- 4 A tale of Two Epis**
- 7 Minutes Of 2018 AGM**
- 8 Minutes May 27<sup>th</sup> meeting**
- 9 Society Information**
- 10 Classifieds**



**From the Editor**

**Dracula bella**

**2019 Meetings:**

**Spring**

**June 24<sup>th</sup>**

Members with last names starting with **W, Y, A & B** are asked to bring goodies for the June meeting.

This is the final newsletter of the Society's 2018/2019 year, as one is not published in July or August.

It has been an unusual and interesting year. Here's hoping that the 2019/2020 year will be a bit calmer. Enjoy your summer. See you in September.

Don't forget to send your name in to Joe Chow if you are interested in becoming a member of the Executive for the 2019-2020 year. The election will be at the June meeting.

Contributions to the newsletter can be made up to 14 days before the next meeting date by contacting me by phone or email. (250-385-8888 or [enviroed@telus.net](mailto:enviroed@telus.net)).

*Logo photo D. Rowles*

## President's Message

The June meeting is the last society meeting for 2018-2019. The year seems to have rushed by! Summer lies ahead. Time to work on our collections – dividing, repotting, establishing new plants.



*John Taylor*

For the AOS monthly judging, the Western Canada Judging Centre, has just held its semi-annual business meeting in Vancouver. Among much else, I am pleased to note that I was moved up from student judge to probationary judge. The major advantage in this is that my vote now counts in judging sessions, but there is still another three or four years to go to reach the accredited judge stage. A long process indeed. We are very fortunate in our society to have three accredited judges which provides an enormous amount of expertise for our growers. Anyone with a well grown plant should seriously consider submitting it for judging at one of the monthly sessions, either for a quality award, based on the superiority of individual flowers, or a culture award based on the skill of the grower in turning out an exceptionally plant.

One of the major advantages of a society such as ours is the opportunity to hear knowledgeable guest speakers who often have plants of high quality for sale. Our speaker this month is Alan Koch of Gold Country Orchids, who is making a return visit. He is both an excellent speaker and a vendor of choice plants. His topic this time around has the intriguing title: 'Species Habitat and Hybrid Culture'. I am sure many of you have taken this opportunity to put in an order for some of the orchids available on his list. I certainly have.

I will be stepping down as president of the Society this year. Six years seems quite long enough; it is time for some new blood. Members should seriously consider running for one of the available executive positions at the next meeting's election. Our society functions on the work of active, enthusiastic volunteers. And volunteers are needed in a great variety of positions quite apart from running the executive. It is always highly rewarding to get more deeply involved. Attending the monthly meetings is just a beginning.

*Spring 2019*  
*June 24<sup>th</sup> – Alan Koch*  
*Gold Country Orchids, USA*  
*Species, Habitat and Hybrid Culture*

John Taylor

## Upcoming Events:

The monthly meeting of the Victoria Orchid Society is held on the fourth Monday of every month except July, August and December, starting at 7:30 p.m. The plants on the display table are presented by experts, followed by a short business meeting, a coffee break with a prize draw of plants and orchid related material, and a featured presentation. The meeting ends at about 10:00 p.m. Often there is a pre-meeting workshop or Question & Answer session from 6:45-7:30 p.m. There will not be a pre-meeting workshop in June as we have the AGM as well as our guest speaker.

**June 24<sup>th</sup>** – This general meeting will feature Alan Koch of Gold Country Orchids, USA speaking on orchid species and culture.

### ***Species, Habitat and Hybrid Culture***



Alan Koch is an internationally known speaker, author, and expert in the *Cattleya* Alliance. He has grown beautiful orchids for over 30 years and Gold Country Orchids has been considered as a fantastic source for species orchids.

His high quality miniature and compact *Cattleyas* are highly prized. He will be bringing plants to sell at this meeting.

He is a very amusing and knowledgeable speaker.

### **Past Events**

#### **May 27<sup>th</sup> – Sasha Kubicek, Orchid Conservation**

Sasha spoke on wild orchid conservation habitats both locally and internationally. He is very knowledgeable about the native orchids on Vancouver Island as those of you who have attended his nature walks will confirm.

An interesting article in the British Guardian Newspaper seems apropos here:

#### **Country Diaries: How the Lady's Slipper Came Back from the Brink**

Written By Carey Davies Published June 10 2019 theguardian.com



**Kilnsey, Upper Wharfedale:** Thirteen years after it was declared extinct in 1917, a botanist stumbled across a single solitary lady's-slipper at a secluded spot in the Dales.

The fissured landscape of the Yorkshire Dales is full of secrets, but over the last century few have been more closely guarded – literally – than the lady's-slipper orchid. Once profuse enough in the limestone landscapes of northern England to have been sold in bundles on the markets of Settle and Skipton, it was obliterated during the devastating Victorian orchid hunting craze known as the “orchidelirium”, and declared extinct in 1917. But all was not quite as it seemed, and today it gives me a shiver to see it flowering brightly amid cowslips and marsh orchids in Upper Wharfedale, albeit poignantly surrounded by a protective cage.

The orchid's rescue from the brink is one of the most fascinating conservation stories in Britain. Thirteen years after its “extinction”, a botanist stumbled by chance across a single solitary lady's slipper at a secluded spot in the Dales. The enigmatic-sounding Cypripedium Committee was formed to

conserve what instantly became Britain's rarest wild flower, but rumours of its location eventually spread, and for some time bivouacking wardens, assisted by tripwires, guarded the plant around the clock during its flowering season. In recent years, Kew Garden botanists successfully propagated seedlings from this solitary parent and reintroduced it to various locations across its former range, including Kilnsey Park, where it is something of a visitor attraction.

My first thought on seeing the painfully delicate, claret speckled yellow flowers here is a sort of disbelief; they seem almost too exotic-looking for these latitudes, the stuff of Mesoamerican cloud forests rather than meadows in Yorkshire. The theory of "shifting baselines" holds that successive generations come to see their increasingly degraded landscapes as natural, and I wonder if this helps to explain my initial shock; having become so accustomed to a landscape shorn of its full richness, this relic of lost glory seems ironically out of place. Above all, though, it is a hopeful symbol of what can be reclaimed, even when it seems irretrievably lost. The future of the lady's-slipper in Britain is far brighter than it was once, but the original "wild" site remains sacrosanct. I am, I think, happy not to know where it is.

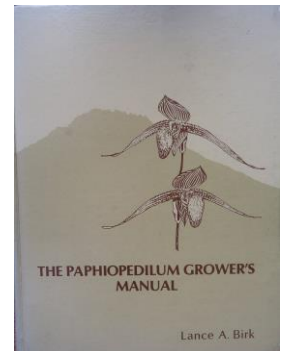
**The Book Corner:** Library Book Reviews by Don Mills

Author: Lance A. Birk

The Paphiopedilum Grower's Manual.

Published by Pisang Press 1983

208 pages, lots of coloured photos.



For a 36 year old "manual" this book reads like a modern species reference source.

Several dozen more new species have been discovered and named since publication,

but this reviewer still regards this book as a great introduction to the growing of the

genus *Paphiopedilum*. Each *Paphiopedilum* species is dealt with under its own subgenus which teaches you, the reader, *Paphiopedilum* classification.

All photography is by the author unless specified. The cultural chapters are laid out in easy to read format. You can even try making your own *Paphiopedilum* cross!

The book is dated with reference to collection of wild species, as conservation laws have severely curtailed this practice. As we all know nurseries provide the best source of plants.

*Don Mills*

## A Tale of Two Epis

*Epidendrum pseudepidendrum* and *Epidendrum ilense* are two species worth growing in greenhouses and tropical gardens — By Ned Nash

Once upon a time, all orchids were classified as *Epidendrum*. Linnaeus established the genus as part of his binomial system in 1753, and so few orchids were known at the time that it seemed to make sense that all orchids should be included in this broadly defined group. Consequently,



*Epidendrum pseudepidendrum*  
'Rudolph' CHM/AOS  
exhibited by Woodstream Orchids.  
Photo by James Osen

as more orchids were discovered, it became clear that they needed to be reclassified into more genera to accommodate the many differences in their morphology. However, and especially until the last few decades, *Epidendrum* has remained a classical catch-all genus with broadly defined characteristics.

As more and more sophisticated taxonomic work is possible, more and more genera seem to emerge from what were once familiarly known as *Epidendrum*. *Prosthechea*, *Barkeria*, *Encyclia* and *Psychilis* are a few of the better known of the more modern interpretations of this widespread New World group.

Today, what are most properly called "epis" are the reed-stemmed plants with the lip adnate (attached) to the column. These are generally robust plants, well exemplified by the commonly seen and brightly colored *Epidendrum ibaguense* complex, which are such popular garden subjects where frost does not often threaten. There are some dull and prosaic plants in this group, as well as a few that are exotically distinct and different. Thereupon hangs our tale.

### **Cultural Needs**

Here we want to discuss one of the most recently described of the genus, *Epidendrum ilense*, and one of the longest-known, *Epidendrum pseudepidendrum*. Both are characteristic of the genus, growing to 3 feet or occasionally more, with attractive foliage on reed-like canes and slightly drooping inflorescences of several to many blooms. Both will also branch off old spikes, so do not be too quick to remove the withered spikes. And both will do well under generalized cultural conditions prescribed for *Cattleyas* - bright light (as for other cattleya types, indicated by strong, upright foliage and a medium-green color) with drying between waterings (this will vary according to pot size, mix, climatic regime and growing area).

These plants are remarkably tolerant in their potting mix needs, as well. They will succeed in just about anything that drains well, from medium - or fine-grade fir bark, to tree fern, to mixtures incorporating such materials as charcoal, peat, perlite or coir (coconut fiber).

Fertilizer should be appropriate to the mix used. If grown in a bark-based mix, the nitrogen will need to be a higher ratio (often 30-10-10 or similar), while in other mixes it is appropriate to apply a balanced fertilizer. The only cultural drawback seems to be a propensity to foliar spotting. Their foliage is a bit on the soft side, and so seems to be more susceptible to leaf spotting that may be caused by cold-water injury to the leaves with subsequent necrosis, according to Jim Rose of Cal-Orchid, Inc. He notes that observant growers have less spotting on their plants than careless ones, so keeping water off the foliage may be an answer.

Owing to their height and light requirements, neither of these two species can really be considered satisfactory for windowsill culture, nor easy under most light set-ups. They are both more appropriate to greenhouse conditions or to tropical shade gardens, where they will often acclimatize in the landscape, making an attractive addition in or out of bloom. In the garden, they require shade from the hottest sun of the day, while in the greenhouse, they can be grown under the same conditions as *Cattleyas* and similar types. Their main season of bloom tends to be late summer into autumn, though it is extended well into the autumn months by the repeat-blooming characteristic.

### ***Epidendrum pseudepidendrum***

*Epidendrum pseudepidendrum*, with its nodding spikes of fleshy apple-green blooms offset by a brilliant orange lip, has been a favorite for many years. Originating in Costa Rica and Panama, today's populations are seed-grown, but only occasionally available.

The two earliest hybrids with this plant appeared around the turn of the century — *Epidendrum Langleyense* (*x wallisii*) in 1899 and *Epidendrum Cleon* (*x radicans*) in 1906 — so it is clearly a species that has stood the test of time. However, no hybrids were registered between the two earliest crosses and the 1960s, when Goodale Moir took up the torch with a series of hybrids including an early *Epicattleya* (*Epc.* Charles Lankester [*x C.* Firefly] 1960). Subsequent hybridizing was often with other, often uninteresting and obscure, *Epidendrum* species, and so in many cases the resulting grexes were not particularly popular or well-known. Some lines were carried on into the second and third generation with the 1980s being an especially active time for second-generation hybrids from *Epi.pseudepidendrum* (17 registrations). Otherwise, activity over the last 30 years or so has been fairly well distributed in each decade, with only a high point worthy of note here or there.



***Epidendrum René Marqués 'Caribe'***  
*exhibited by Caribe Plants Inc.,*  
*photo by Mei-Ling Melendez.*

A cross that is occasionally seen at shows is *Epicattleya René Marqués* (*x C.* Claesiana). Looking much like a slightly larger, improved epidendrum, *Epc.* René Marqués makes an impressive showing on plants that may reach more than 4 feet tall. This hybrid also demonstrates one of the drawbacks of epidendrum breeding: the exceeding dominance of the epidendrum parent. When one begins to research into some of the more obscure breeding lines, such as we have here, the byways traversed by adventurous breeders are nothing short of amazing.

One of the true pioneers of intergeneric breeding, after, of course. W.W.G Moir, has to be Joseph Rumrill. He has been no less active with *Epi. Pseudepidendrum* than with other unusual types, and one of his most intriguing hybrids is *Epileptovola Hyperion* (*x Lptv.* Rumrill Snow [*Leptotes bicolor x Brassavola nodosa*]). Not unexpectedly, another of the few well known hybrids is *Brassoepidendrum Pseudosa* (*x B. nodosa*). Rather like a good soft drink, everything seems to go better with *B. nodosa*. One cannot ignore *Epidendrum Plastic Doll* (*x ilense*), which was registered in 1989.

### ***Epidendrum ilense***

*Epidendrum ilense* is one of the most recently discovered and described members of this genus, having been found by Calaway Dodson, PhD, in a section of recently cleared forest in Ecuador in May 1976. It was subsequently distributed by the Marie Selby Botanical Gardens in Sarasota, Florida (see page 1083 in the September 1981 AOS Bulletin). Sadly, when Dodson went back to the locale, he found that the several plants he had collected from fallen trees were all that remained of the population. On a happier note, and though Dodson's early attempts met with failure, *Epi. ilense* has proven to be relatively easy to propagate from both tissue culture and from seed, so now there is a stable supply of nursery-raised seedlings in a case not dissimilar to that of *Paphiopedilum delenatii*.



***Epidendrum ilense 'Magnifico'***  
**AM/AOS**  
**exhibited by Mrs. Ralph Levy,**

The typically nodding spikes borne over light green, rather softly foliaged canes bear distinctive blooms with a most unforgettable fringed lip. As with *Epi. pseudepidendrum*, the spikes have a habit of re-blooming. And also as with the previously discussed species, *Epi. ilense* seems to be dominant in its breeding characteristics. Both because of its fairly recent discovery, and because it seems to be one of those orchids that is best left alone (because it is more handsome than its hybrids), relatively few hybrids have been registered with *Epi. ilense* as a parent.

Besides the previously mentioned *Epi. Plastic Doll* (*x pseudepidendrum*) — which, interestingly, has been used as a parent to make *Epidendrum Petit Doll* (*x criniferum*) — probably the best known of the five hybrids registered to date is *Epicattleya Dormie* (*x C. Dormaniana*), which has received an AOS flower-quality award.



*Epidcatleya Dormie 'Magnifico'*  
AM/AOS  
exhibited by Mrs. Ralph Levy,  
photo by Marcus Valentine

For students of orchids who love anecdotes and history, odd and unusual plants and hybrids, there are probably no better examples of truly good orchids than these two species. Worth the little bit of extra effort to search out and grow well, these plants and their hybrids will reward the diligent hobbyist with foliar and floral beauty, as well as a wealth of stories with which to amaze the less-informed.

Ned Nash is a former Director of Conservation and Education of the American Orchid Society. This article first appeared in ORCHIDS, November 1997 and has been updated to reflect current taxonomy.

**Victoria Orchid Society  
Minutes of Annual General Meeting, June 25, 2018**

The meeting of June 25, 2018 was held at the Gordon Head United Church Hall. President John Taylor called the meeting to order at 8:00 p.m. It was determined we had a quorum.

Secretary's Report: MOTION: Melanie Norris/ Rod Crutcher moved and seconded that the minutes of the June, 2017 Annual General Meeting be approved and accepted as published.

CARRIED UNANIMOUSLY

Reports: Reports were prepared by the President, Secretary, and Treasurer and are attached to the minutes. The President's report and the Secretary's reports were read.

Auditor's Report: Jill Livesey prepared the financial report for the fiscal year ended May 31, 2018 and read the details to the members. She will arrange to have the report audited.

Election of Officers: Conducted by Rod Crutcher. The following slate of nominees was presented:

- |                |  |
|----------------|--|
| President      | John Taylor  |
| Vice President | Diana Rowles   |
| Secretary      | Barbara Davies   |
| Treasurer      | Jill Livesey   |
| Directors      | Alida Bower, Deborah Ward, Poul Hansen, Melanie Norris,<br>Sasha Kubicek, Catherine Frutiger, Astrid Firley-Eaton,<br>Rodney Crutcher. |

Rod called for the nominations from the floor after announcing the candidates. No further nominations were forthcoming, so all were elected by acclamation.

Adjournment: The President adjourned the meeting at 8:15 p.m.

Respectfully Submitted, Barbara Davies

**Victoria Orchid Society  
Minutes of the General Meeting, May 27, 2019**

The General Meeting of May 27, 2019 was held at the Gordon Head United Church Hall. President John Taylor called the meeting to order at 7:30 p.m. There were no new members or guests this evening. Poul Hansen presented the Show table.

Poul Hansen announced that Joe Chow has received the Carl Luer Award for his *Masdevallia* Minaret Burrard Inlet, CCM/AOS.

**Treasurer's report:** Jill Livesey presented a combined report for both March and April. She reported that the April Auction made \$424.25 and the balance in the operating fund is \$8,107. She also has transferred another \$1,000 to the Term Deposit. Jill moved and Poul Hansen seconded that the treasurer's report be accepted as read.

CARRIED UNANIMOUSLY

**Secretary's report:** John Taylor moved and Catharine Schlenker seconded that the minutes from the March General meeting be approved as published in the newsletter. There was no General meeting held in April due to the Annual auction.

CARRIED UNANIMOUSLY

Barb reported that she has sent out cards to Svend Munkholm, who is recovering from surgery and to Donna Stuart, who is having some medical treatments. A Thank-you card has been sent to Joyce Wilson, who has resigned from the executive, thanking her for her years of service. As Show chair, Barb has sent an email to Abu Salleh, stating that next year's Spring Show dates will be February 28, 29 and March 01, 2020. She also emailed Our Lady of Fatima church asking to reserve those dates.

**Other Reports:**

**AOS:** John stated the next AOS judging will be in Richmond, June 8, 2019. Poul will transport any members' plants. Please have them at Poul's house by Thursday evening.

**COC:** Catharine Schlenker will be our new representative.

**Membership:** Kathryn reported there are currently 94 members.

**Library:** Thank you to Don Mills for writing book reviews for the newsletter.

**Newsletter:** password-Members were reminded of the password to get into the newsletter on the VicOS web site. Signed up members can retrieve it from any members of the executive if they forget it again

**Plant sales:** Rick stated they also have carnivorous plants for sale this evening.

**Program:** Rod reviewed that June 24<sup>th</sup>, Alan Koch, Gold Country Orchids, is the speaker on USA Species, Habitat and Hybrid Culture. Pre-orders for plants to Sasha by May 31, 2019, please.

**Supplies:** Catherine reported on the challenges in the *Orchiata* order arriving in Canada and said it should be available sometime after June 12<sup>th</sup>.



**Program:**

Sasha Kubicek spoke on Orchid Conservation. He encouraged members to look for a worthy cause to support and listed a number of both international and local organizations.

John thanked Sasha for his informative talk.

**Adjournment:** The President declared the meeting adjourned at 9:25 p.m.

Respectfully submitted Barbara Davies

**Society Information**

Meetings are held at the Gordon Head United Church Hall, 4201 Tyndall Avenue, Victoria, B.C. on the fourth Monday of the month. Members are encouraged to bring their orchids in bloom to display on the show table.

Guest speakers are engaged for these meetings and often, speakers bring plants for sale. There is also a sales table where plants brought in by members may be purchased. There is often a pre-meeting, basic workshop from 6:45 – 7:30 p.m. Plant sales begin at 7:15 p.m. and the meeting runs from 7:30 p.m. to 10:00 p.m.

Membership fees are \$25.00 for individuals, \$35.00 for households. The Society membership year runs from September to September, but meetings are not held in July and August. Name tags are available for \$9.00, magnetized tags are \$11.00.

Coffee and tea are available for \$1.00 at the meeting and goodies are provided by members in rotation, based upon the initial letter of their last names. Goodies are requested from those with last names beginning with **W, Y, A & B** for the June meeting.

The Victoria Orchid Society Newsletter is published monthly, around the 15<sup>th</sup> of each month, excepting December, July and August. Newsletters will be sent by email to members with email access. Email addresses will be blind copied. Upon request, copies of the newsletter may be picked up at meetings for those not wishing to print off their copy at home.

Newsletters will now be posted and archived on a *members' only* page on the new website and members will be issued a password to access it. This will give a little more privacy to people and events that are shown in the newsletter. Members who do not wish even this amount of exposure, please let the newspaper editor know and photos of them will be blurred or omitted.

Advertising, in the newsletter, is free of charge to members in good standing: \$2.00 per business card size ad per month to a member owned business (\$15.00 per fiscal year), \$5.00 per month to non-member businesses (\$40.00 per fiscal year). Businesses may also advertise on the Victoria Orchid Society web site *Classifieds* page for the same costs.



*Phragmipedium Joan Montmorency*

The Society's mailing Address is 195 Maddock Avenue West, Victoria, B.C. V9A 1G5.

**Officers:**

President John Taylor  
Past President Ingrid Ostrander  
Vice-president Diana Rowles  
Secretary Barbara Davies  
Treasurer Jill Livesey

**Directors:**

Lioba Samer  
Kathryn Collins  
Poul Hansen  
Catharine Schlenker  
Blair Humphrey

**Newsletter Editor:** Diana Rowles  
**Web Masters:** Diana Rowles/Catharine Schlenker  
**Proofreader:** Joe Chow  
**Librarian:** Elsie Gerdes/Bill Cleugh  
**Membership:** Kathryn Collins

**Spring Show Chair:** Barb Davies  
**Programs Chair:** Rodney Crutcher

In emergencies, call John Taylor at (250) 479-0146.



*Epidendrum Joseph Lii 'Kultana'*

**Classifieds**

**KINGFISHER ORCHIDS**



**Quality  
Orchid  
Plants**

*Kingfisherorchids@gmail.com*

**Specializing in Phalaenopsis**  
Custom flasking service now available

**Patrick van Adrichem**  
250.656.3094

**B.C. GREENHOUSE BUILDERS LTD.**  
The Gardener's Choice since 1951

represented by  
**Russ Davis**

572 Peto Place  
Victoria, BC V8Z 2K6  
wk: 250-727-0067  
cell: 250-744-6714  
email: davisconstruction@shaw.ca <sup>m</sup>

**Sales and Service**

- Commercial and Hobby Greenhouses
- Pre-fabricated Enclosures
- Cold Frames
- Heating and Ventilating
- Soil Cables
- Automatic Vent openings

**It's time to repot!**  
Supplies for the home grower  
**Fir Bark, New Zealand Sphagnum,  
Clear Pots, Custom mixes and more.**

 [www.ravenvision.ca](http://www.ravenvision.ca)

Online only:  
10% discount for VOS members  
Coupon code: VOSNL

